

USE CASE

OFF-HOURS PRESENCE DETECTION

Safe Hospitals

Operational View



DETECT

PRESENCE DETECTED DURING OFF HOURS

The presence of an individual is detected in a sensitive area during off-hours. An alert is automatically sent to appropriate staff on the device of their choice and to the command center.



ANALYZE

SITUATIONAL AWARENESS GATHERED

In the command center, nearby cameras are populated and closest response resources are determined using GPS location data.



COMMUNICATE

RESOURCES DISPATCHED

Appropriate individuals are dispatched to the area with image of the intruder and other multimedia intelligence.



RESPOND

SITUATION RESOLVED

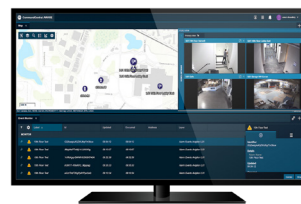
Security teams remove the intruder and secure the area and an incident is logged with pre-populated fields.

Technology View



DETECT

- Avigilon Control Center
- Fixed Video Security
- Orchestrate



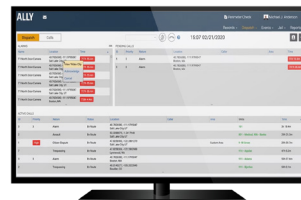
ANALYZE

- Avigilon Control Center
- CommandCentral Aware Enterprise



COMMUNICATE

- Radio Communications: Voice & Multimedia
- WAVE PTX: Multimedia Sharing & Broadband Push-to-Talk
- Avtec Dispatch Console



RESPOND

- Ally Incident Management



*Camera footage is for illustrative purposes only

Motorola Solutions, Inc. 500 West Monroe Street, Chicago, IL 60661 U.S.A. motorolasolutions.com

MOTOROLA, MOTO, MOTOROLA SOLUTIONS and the Stylized M Logo are trademarks or registered trademarks of Motorola Trademark Holdings, LLC and are used under license. All other trademarks are the property of their respective owners. © 2021 Motorola Solutions, Inc. All rights reserved. 12-2021 [LD02]